

Quellsanierung Acqua d'Balz und Agn

Bauprojekt

Schürfplan 1:1000

Index	Datum	Änderung	Gez.	Geprüft	Plan-Nr.
					7142.0050/503
					Datum 09.02.2021
					Zeichner sst
					Geprüft zst
					Plangröße 750 x 840

uli lippuner ag wasserconsulting
Höfigasse 10, CH-7304 Malenfeld
+41 81 723 02 25, info@ulippuner.ch
www.ulippuner.ch




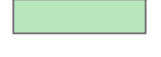





Gesuchsteller / Bauherrschaft:

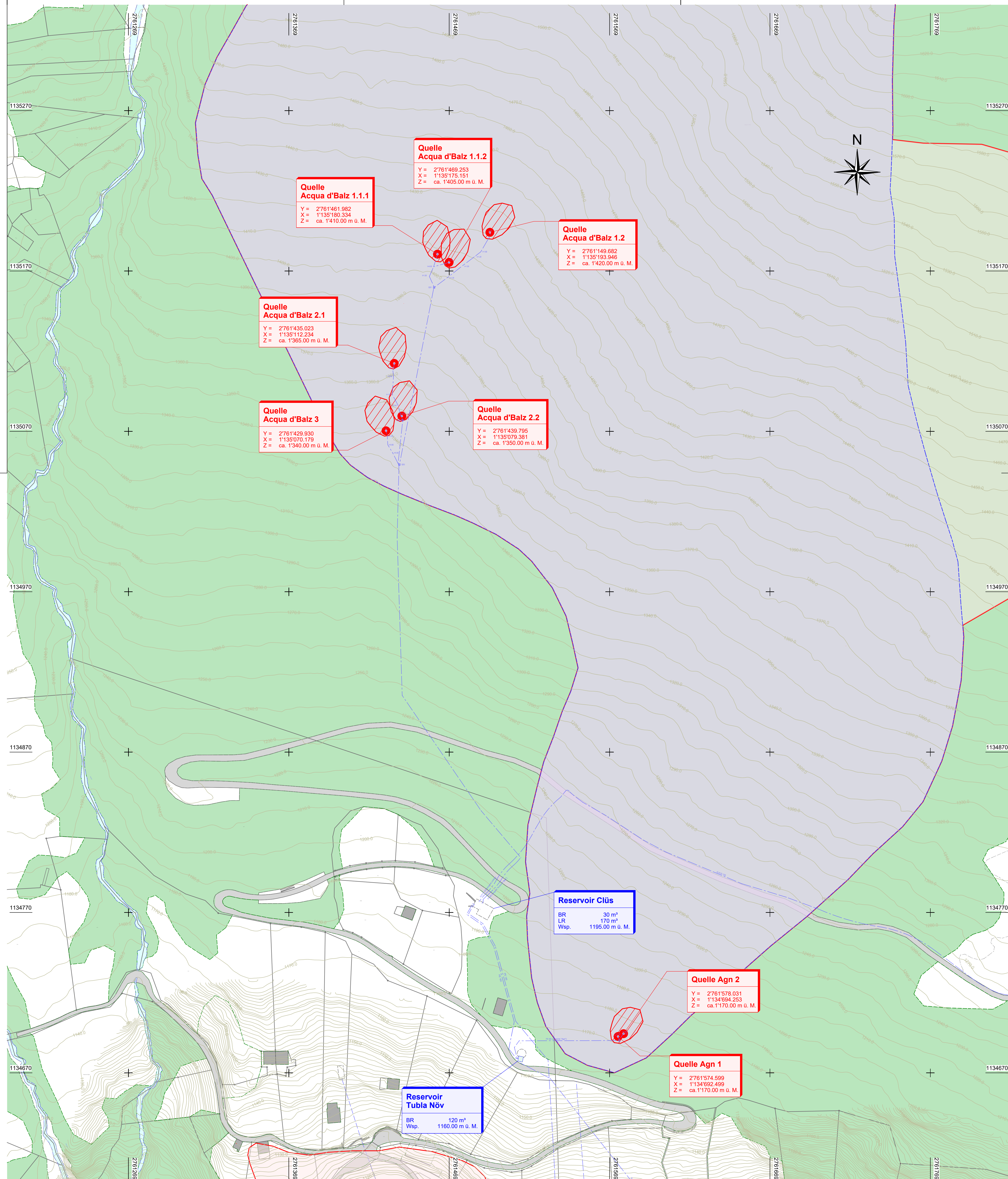
Datum Unterschrift

Projektverfasser:

Datum Unterschrift

Legende

-  best. Gebäude
-  best. Strassen
-  best. Gewässer
-  best. Wald
-  Höhenkurve
-  Gewässerschutzbereich Au
-  Gewässerschutzzone provisorisch
-  Quelle
-  Mögliche Schürfzone



**Quelle
Acqua d'Balz 1.1.1**
Y = 2761461.982
X = 1135180.334
Z = ca. 1410.00 m ü. M.

**Quelle
Acqua d'Balz 1.1.2**
Y = 2761469.253
X = 1135175.151
Z = ca. 1405.00 m ü. M.

**Quelle
Acqua d'Balz 1.2**
Y = 2761149.682
X = 1135193.946
Z = ca. 1420.00 m ü. M.

**Quelle
Acqua d'Balz 2.1**
Y = 2761435.023
X = 1135070.179
Z = ca. 1365.00 m ü. M.

**Quelle
Acqua d'Balz 3**
Y = 2761429.930
X = 1135070.179
Z = ca. 1340.00 m ü. M.

**Quelle
Acqua d'Balz 2.2**
Y = 2761439.795
X = 1135079.381
Z = ca. 1350.00 m ü. M.

Reservoir Clüs
BR 30 m³
LR 170 m³
Wsp. 1195.00 m ü. M.

**Reservoir
Tubla Növ**
BR 120 m³
Wsp. 1160.00 m ü. M.

Quelle Agn 2
Y = 2761576.031
X = 1134694.253
Z = ca. 1170.00 m ü. M.

Quelle Agn 1
Y = 2761574.599
X = 1134692.499
Z = ca. 1170.00 m ü. M.